



Brightminds bigfutures

Making the Borough of Stockton-on-Tees **a great place to grow up**

People Select Committee
Disability Inclusive Borough
Monday 26.07.21

Welcome and Introductions

Lilly Crisp

Head of Communications and Engagement – Big Committee



Recruitment

- **BMBF is open to all young people aged 11 to 19 or up to 25 with SEN**
- **When any young person wishes to join BMBF, we have a recruitment form and pledge which must be completed.**
- **If under 18 there is a section which a parent or guardian must complete**
- **We ask for basic personal information, along with any health conditions / dietary requirements etc**
- **We also have 2 questions around disabilities**

Do you consider yourself to have a disability?

Yes No

Are you registered disabled?

Yes No

Pledge

- All members must agree and sign to the below pledge before joining.
- We encourage members to respect and listen to the views of others and create an inclusive environment, where everyone is confident to make their voice heard.

All members of Bright Minds Big Futures must agree to the BMBF Pledge, copied below.

I recognise that Bright Minds Big Futures is a team. As a member of Bright Minds Big Futures, my behaviour must put the reputation of the movement first. I will therefore:

- Treat the feelings and property of fellow members, supervisors, and the staff and owners of any venue we use with respect.
- Follow the instructions of supervisors, including those of a similar age to myself or younger.
- Work with fellow members cooperatively and without hostility.
- Focus on the tasks I am given and not limit the experience of other members or the general public with inappropriate behaviour.
- Respect and listen to the views of all other members, helping us create an inclusive environment where everyone is confident to make their voice heard.
- Quickly report any bullying I witness within our movement to a supervisor.

Big Committee

The Big Committee is a self elected group that leads on various departments and oversees activity within BMBF

At the last election we made some changes to ensure that all groups were represented. We are delighted to say we now have the following positions on Big Committee.

Head of Diversity and Equality
Parul Sinah



Head of Special Educational Needs (SEN)
Alex Mathews



Big Objectives

Each Head works with SBC to develop their Big Objectives. These are the main priorities they want to focus on during their elected term. They are developed by consulting with young people and also by using information gathered from British Youth Council's Make your Mark scheme.

Some of the Big Objectives 2020/21 include:

- Support and empower young people with SEN to have a voice
- Engage and recruit young people with SEN to get involved in activities and events
- Improve knowledge and understanding of SEN

- Promote and value equality and diversity
- Zero tolerance of bullying, harassment and victimisation
- Improve knowledge and understanding of beliefs, cultures and disabilities

Due to lockdown and restrictions, BMBF have extended the term for Head positions on the Big Committee to February 2022, which will allow them more time to develop projects and activities to meet their objectives

Here is a video we created for Autism Awareness Week - <https://youtu.be/hOkdtniyXHA>



BMBF Approved

Across our Borough, children and young people should feel welcome when they provide the Borough's shops, cafés and leisure activities with their custom.

Head of Business, Regeneration and Transport developed the 'BMBF Approved'. An award to recognise businesses who provide a welcoming atmosphere to young customers. To achieve this award, they must simply meet specific criteria.

Most recently BMBF identified there were some gaps in the criteria and the following have now been included:

Is the business venue suited to customers with disabilities, visible and invisible?

How does the business help people that have hidden disabilities?

My Journey with BMBF

I joined BMBF in 2018 and I was 14. I have dyspraxia and suffer with anxiety. I really wanted to meet new people, but was worried if joining BMBF would present me with any co-ordinational challenges. One of my first roles with BMBF was to join the Corresponding Team for SIRF. I received full training and was given a mentor who supported me through the whole process

It really pushed me out of my comfort zone, I loved every minute of it, and I knew I had the support of my mentor and the rest of the BMBF team if my dyspraxia or anxiety became a challenge

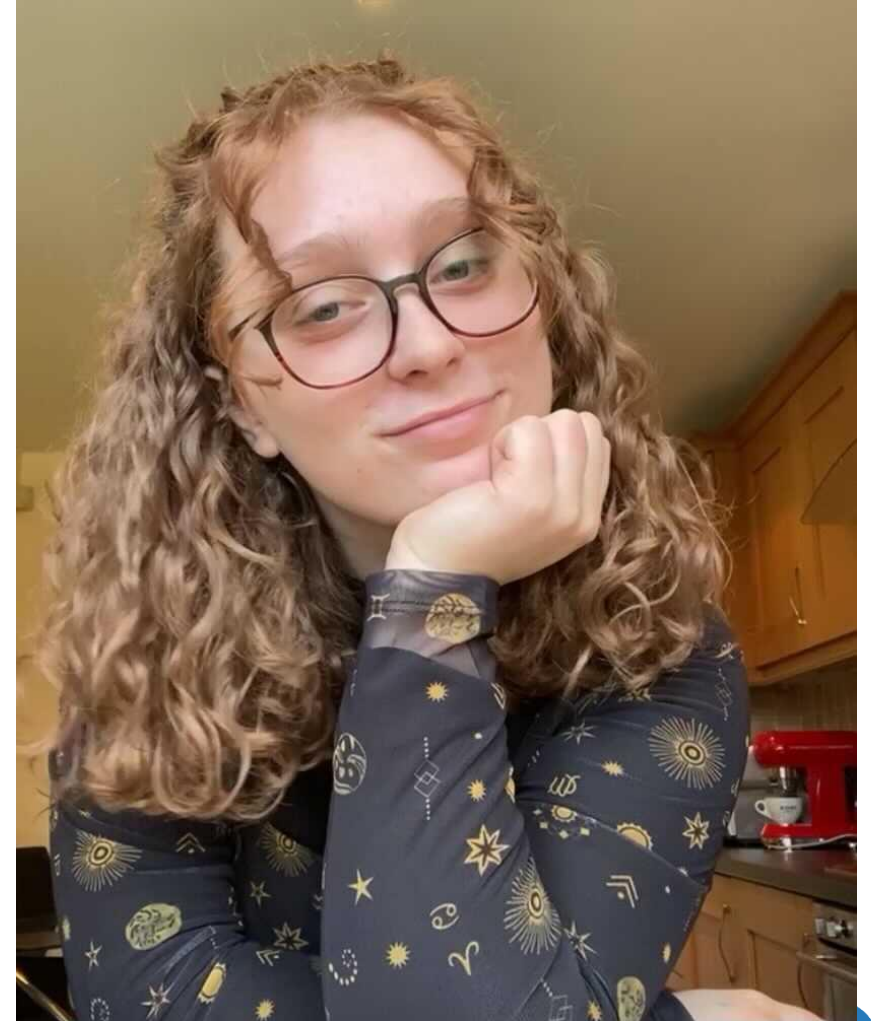
I was eager for the next event and when I went back to school in September, I couldn't help but express how amazing my summer had been by being involved with BMBF

In the December 2018 I joined the Big Committee as Head of SBC Correspondents, it was an absolute pleasure, I was ecstatic. I couldn't wait for another year to help others and to keep on pushing myself, increase my confidence and self esteem whilst being surrounded by a great community of people who were supporting me each step on the way.

No matter role I have had within BMBF, there has always been support available, and all the members will always have your back. Some of my favourite memories was my creation of the SIRF podcast, interviewing acts and SIRF 2018! Hard work is always needed as shown when it was SIRF at home last year which really helped correspondents create a strong bond even though it was virtual! I'd like to personally thank: Jane Webb, Sophie Haste and Emily Hill for being there for me through my BMBF journey, making me feel so welcome and part of a team

Katie Jenkins

“I’ve been apart of BMBF since December 2020 and have always felt supported by the people around me, and felt like I was able to speak up about my disability if I ever needed to. Having a hidden disability means it can often be scary having to share that part of you with others, but I’ve always been well supported whenever I have told others about what I struggle with!”



Any Questions???



Don't forget to follow us!



@brightmindsbigfutures



@_bmbf



@_bmbf